



Love to Langa's Mannie Edelstein Montessori Academy

Project Manager:	Kissmea Adams	m:	076 745 3384	e:	Kissmea@giso.org.za
Funding enquiries:	Dalene Gallagher	m:	083 867 6252	e:	Dalene@giso.org.za
Project Coordinator:	Courtney Lockhart-Ross	m:	083 229 5155	e:	Courtney@giso.org.za

We empower, develop and sustain community projects

Registered in the US as non-profit organisation in South Africa as a public benefit organisation

USA Office
PO Box 104
Gladwyne, PA 19035-0104

South African Office
PO Box 1011
Green Point, 8051
Phone: +27 076 745 3384

1. Langa: Cape Town's oldest apartheid township

Langa, which means “sun” in isiXhosa, was established in 1927 and is the oldest township in the greater Cape Town Area. The 1902 Location act was expanded to formalise administration and the 1923 Urban Areas Act enforced the “compulsory residence of Africans in locations,”¹. Langa became the site of many anti-Apartheid activities in the fight for democracy.

Despite the advent of democracy in 1994, Langa remains a community characterised by poverty, with both generally low education levels and a high school dropout rate; these contribute to the equally high unemployment especially among the youth and women. This is complicated by the challenges associated with accessing skills training.

Other social challenges include child pregnancy, HIV/AIDS and gender-based violence. These have, of course, been exacerbated by the COVID-19 pandemic: in a community where, already, too many children were not in school because they either have no access to education or they drop out in the hope that they can generate an income to support their families.

1.1. Early Childhood Development Challenges in Langa

More than 52,000 people live in Langa which is served by some 22 early childhood development (ECD) centres, six of which are not registered.

1.2. Early Childhood Development Programmes: their value

The value – in social and economic terms – of early childhood development interventions are well established. The World Bank notes that children born into poverty, the “equity enhancing impact of early childhood interventions hold the promise of overcoming social disadvantages and breaking the intergenerational transmission of poverty.”²

1.3. Rising to the Challenge

- ▶ Love to Langa is rising to the challenges confronting Langa’s children by building a Montessori pre-school in Langa that incorporates a Montessori Training Programme.
- ▶ The pre-school and aftercare will ultimately cater for 200 children with six Montessori directresses, four assistants, a principal and a school manager.
- ▶ The Montessori Training Programme for community women will emphasise entrepreneurship and small business, empowering early childhood teachers to open and operate their own sustainable centres.



¹ South African History Online: available from <https://www.sahistory.org.za/place/langa-township-cape-town>

² Independent Evaluation Group, World Bank: available from <https://ieg.worldbankgroup.org/evaluations/wb-support-early-childhood-development>

While Apartheid no longer forms part of South Africa's statutes, its lasting impact, limiting opportunities along racial and socio-economic lines, are still apparent in many of the country's poorer communities.

The Montessori Academy will help change this for the children, parents and teachers of the Langa community.

The need has been voiced time and time again, and with our official partner, Global Impact Social Advisory & Outreach, who have an excellent track record of other sustainable builds, we are raising funds to make this dream a reality.

The Love to Langa model values the whole child in and outside the classroom with education offered by teachers who are competent, caring and qualified and who, themselves are valued and nurtured. Inherent in this model is ensuring that our teachers will not be overworked, losing their sense of self, and who are inspired to further their own educational journeys.

To achieve this, educators must be able to rely on a well-functioning ecosystem that exposes them to new and innovative educational philosophies. This includes access to research-led institutions that generate new ideas; these are integral to quality, training and support and underpin longevity and sustainability.

1.3.1. Supporting the Broader ECD Community

Through the Love to Langa educational model, a first of its kind in this community, the board hopes to change the understanding and practice of education and enable the Langa community to experience this through their children's experience.

To achieve this Love to Langa will also develop partnerships with educators, government and local educational forums. Consequently, the centre will be a hub for Langa's multitude of non-registered places of care (creches) offering guidelines to help their educators to follow more appropriate educational programmes.

2. More than a school –a Montessori Academy

2.1. Objectives and benefits for the Langa Community

Love to Langa has the following three objectives that it wishes to achieve through the Montessori Academy:

Objective 1:

To develop and provide quality early childhood education to ± 200 children in Langa, preparing them for entry to Grade 1.

Objective 2:

To train, empower and support local women as entrepreneurial Montessori Directresses who will be empowered to to operate their own schools, generate income and support their families.

Objective 3:

To establish a premium, quality, sustainable centre of learning in the local community that incorporates five classrooms, each equipped for ±40 children.

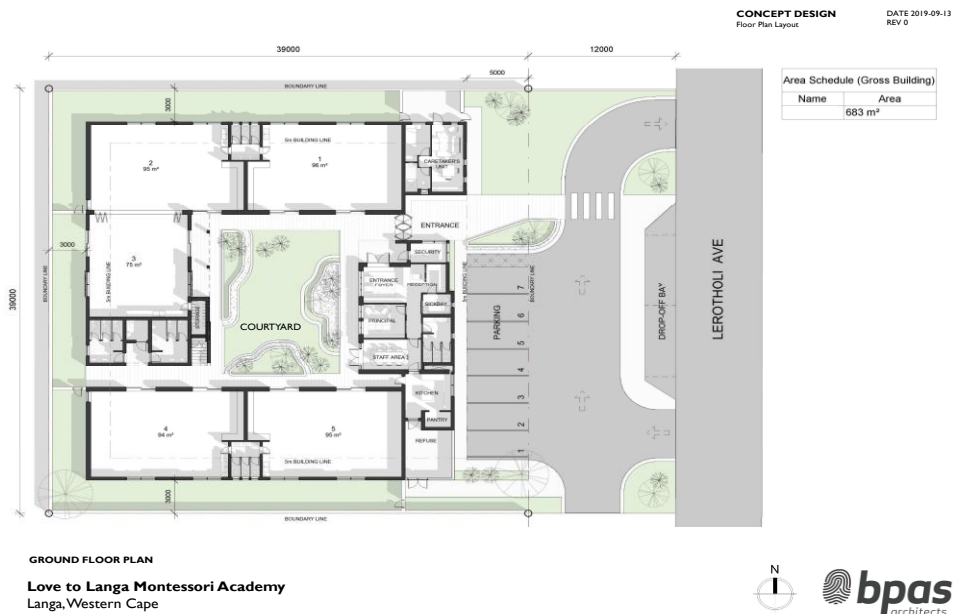
In addition to the obvious benefit of an ECD and aftercare centre that runs a programme approved by the South African Montessori Association, the Montessori Academy will be a safe haven for children who will receive nutritious meals daily. It will also provide an after-care service for working parents unable to collect their children at the end of the “school” day.

2.1.1. What the centre will look like

The centre, in addition to the five classrooms, will include disabled facilities (bathroom and access to classrooms as well as an inclusive classroom), bathrooms for the boys, girls and teachers. There will be a fully functional kitchen and a sick room. Along with a properly equipped playground, there will be a rooftop vegetable garden, water recycling unit and premises for an on-site caretaker.

Plans have been drawn up on for the site that has been secured and are available on request.





2.2. Why Montessori? The Philosophy

‘Montessori [philosophy]... inspire[s] confidence, nurture[s] the child's innate desire for learning, discovery, and social interaction skills in an environment where teachers are encouraging, engaging and value[ing] the individual child. Children learn how to learn, and this prepares each child for future academic and social excellence.’³

The Montessori approach is an integrated one: practical life, and sensory activities form the foundation for learning language and mathematics with culture forming a golden thread that runs through all learning experiences.

The Montessori approach is an innovative education model and the school will form a hub for empowerment, productivity and success. Montessori is not trademarked and it was the wish of the founder. Montessori should be available to all, it is for all children, parents, educators and that alone speaks volumes from an entrepreneurial or social view.

2.3. Teacher Development

In order to boost the likelihood of the successful uptake of the Montessori philosophy in the Langa community, we need to provide a centre that nurtures individuality, confidence and independence in children – and their teachers.

2.3.1. Training to date

In order to have a functional and sustainable Montessori school, qualified staff is key. To date seven women from the Langa community have completed their training with the Montessori College of South Africa with only their practical hours remaining (Professional Placements) in order to receive their (Sector Education and Training Authority) SETA accredited higher certificate. After the 150 hours of practical training the teachers in training will commence teaching in a

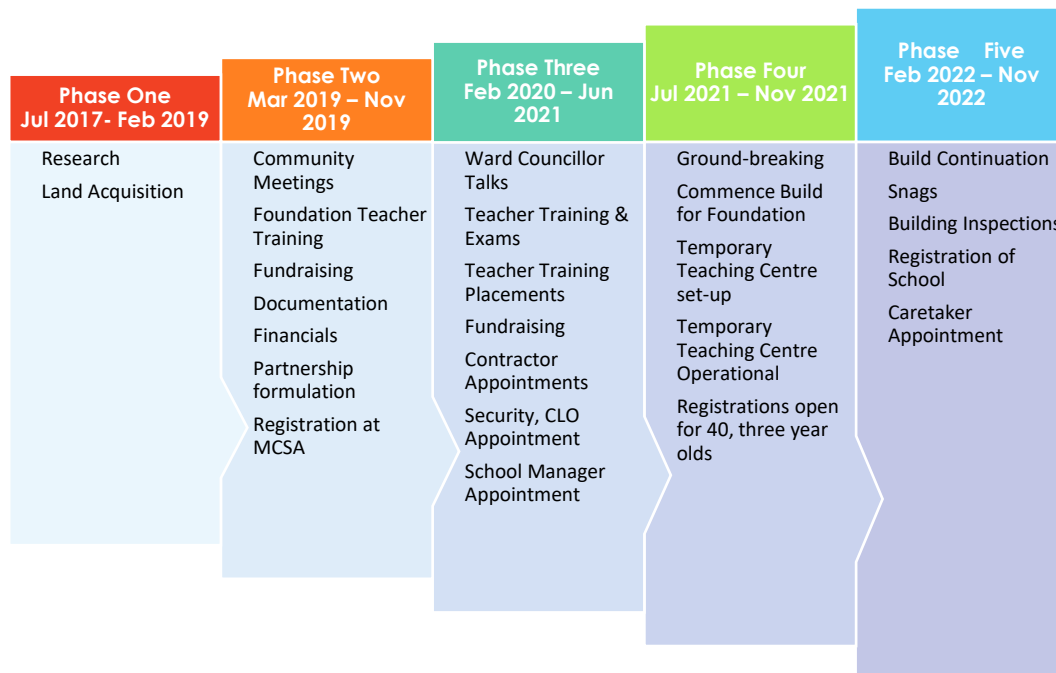
³ Webster Montessori School: available from <https://www.webstermontessori.org/why-choose-montessori>

temporary structure in Langa in July 2021 while the brick and mortar school is being built. A manager has been assigned to the teachers in training.

3. Progress Towards Achieving the Vision

The timeline below, is based on securing the necessary funds for establishing and operating the campus.

The project is divided into five phases, some of which are complete, while others are ongoing.

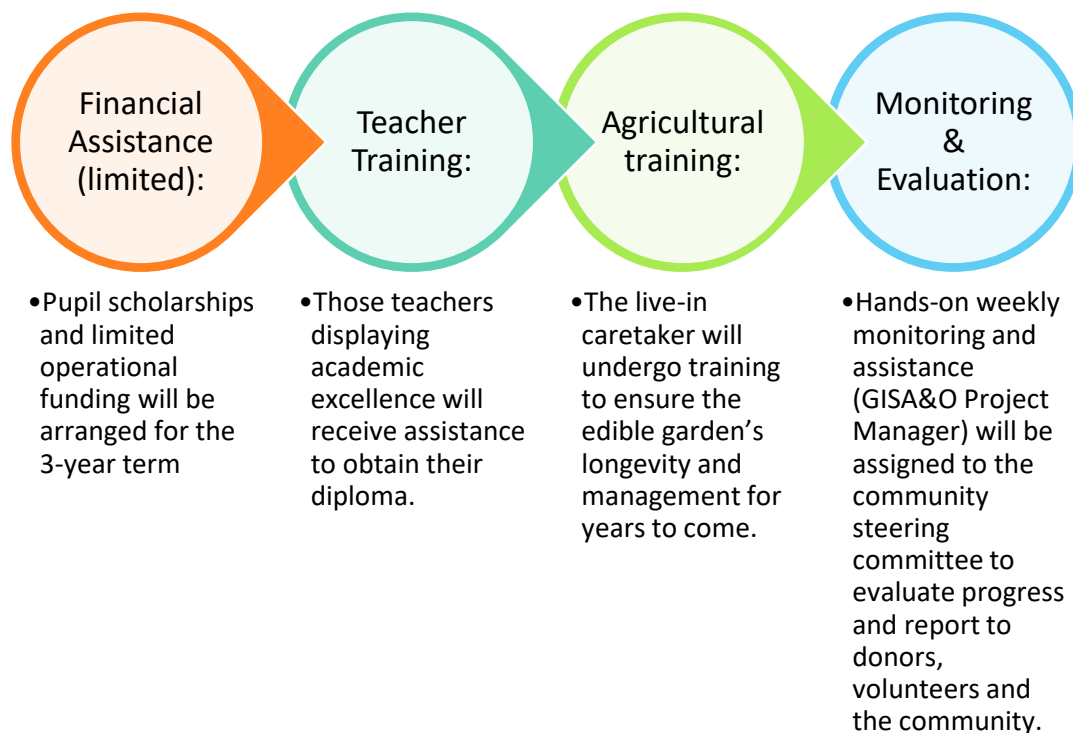


3.1. Site

The Diocese of Cape Town donated 2000m² of land in Langa Township for this very special project.

3.2. Sustainability Plan

The Montessori School sustainability plan consists of a three (3) year term assisting the educators & the appointed community steering committee to develop an operational institution that generates income.



Love To Langa’s involvement with the Montessori School will continue for ten years, after the ‘3-Year Sustainability Plan’ has lapsed, offering marketing for donors and volunteer visits.

3.3. Finances and Expenses

3.3.1. Accountability and Reporting

It is imperative that there is 100% transparency by a non-profit, and because of this there will be regular reporting sent on to the Love to Langa Board and project funders, prepared by GISA&O. Financial accountability is vitally important, therefore the Love to Langa financial records will be audited by an independent auditor every tax year. We place high priority on financial transparency so as not to jeopardise future funding and to maintain a good relationship with current and future funders.

We value our donors, and take pride in keeping them informed of how their incredible contributions have been utilised, and received by the beneficiaries.

The following reporting methods will apply and be provided to all donating parties for the duration of the project:

3.3.2. Montessori School

Quarterly Update Reports

Audited Financial Statements (Annual)

Company visits & volunteer work sessions will be allowed

3.3.3. Love To Langa

Annual Report

Audited Financial Statements

4. Donor Benefits & Packages

Each and every donor, both individual and corporate, are very special to Love to Langa, we will support our patrons with mentions across our various platforms:

Love to Langa is a US-based 501(c)3 charity

18A Receipt: Love to Langa Cape Town (SA office) is a registered Public Benefit Organisation Ref No.: 930069356

Naming Rights: We have varying venue naming right opportunities available which are highlighted in our donor packages.

5. More about Love to Langa

Love to Langa is a US based 501(c)3 non-profit organisation, which has been operating in Cape Town, South Africa for 15 years supporting and initiating successful, and sustainable projects within the townships. The head office is in Philadelphia, Pennsylvania in the USA. Since the organization's inception, the registered non-profit has grown from strength to strength working with communities and empowering countless men, women and children annually. Due to the continued success, Love to Langa's board partnered with a local project management company to ensure all projects adhere to timelines and fall within the ethos of the organisation.

Love to Langa has a history of completed build projects in Cape Town, South Africa. The board, have come a long way, from supporting children with bursaries, providing food and clothing, training teachers, art workshops, outings for previously disadvantaged children and adults, to longer term projects, such as building and equipping a classroom, building a moveable library, building additions to an orphanage as well as a learn to swim indoor heated pool which is currently providing swim lessons for 150 children weekly at an early childhood development centre as part of the curriculum at no cost to parents.

5.1. The Board and Governance

The board members come from an array of different backgrounds, from journalism, law, public health, education, real estate, social and financial. Six of the seven board members (including one who grew up in Cape Town), live in various states across the United States of America, , whilst the seventh member is proudly South Africa. Having one of the board members in South Africa means we have an ear to the ground and understand all about the culture of South Africa. It is very easy to

go into a country and tell them what to do or what they need, however having the South African influence we know now to ask the community what their wants and needs are without forcing ourselves on them or assuming donors know best.



5.2. The role of Global Impact Social Advisory

Love to Langa partners with Cape Town based GIS Advisory & Outreach, to facilitate the following areas on their behalf within the South African economy.

Global Impact Social Advisory and Outreach is a Non-Profit Organisation, which is an outcome of the Project Management Company (Global Impact Social Advisory). This outreach arm ensures we uphold our values and follow a path of service. With more than 10 years' experience in the industry and a proven track record we wanted to find a better way to give back. We work together with communities to help empower them by creating long-term, sustainable projects through proper delivery channels.

The outreach sector partners with Love to Langa Cape Town, a registered Public Benefit Organisation (PBO ref no: 930069356), the South African affiliate of Love to Langa USA.

- Project Management
- Fundraising
- Land Acquisition
- Community Accreditation
- Monitor & Evaluate
- Workshops

The partnership has spanned ten years, and has been entrenched with each completed project managed to date, however the three most notable builds to date were that of the Love To Langa Library (Philippi); The Love To Langa Swimming Academy & the Love To Langa Grade R Classroom.

6. Sources of Financial and in-kind support to date

